





# We Are....



# I SEE STEM Mission Statement

The Idaho South & East EcosySTEM works to engage partners from our regions (preK-12, higher education, informal education, and industry) to achieve coordination, collaboration, equity and inclusion for all.

As a regional alliance of the Idaho STEM Ecosystem, I SEE STEM strives to support the state vision and our regional mission through the following:



## Goals

Connect and build sustainable, mutually beneficial networks devoted to moving STEM forward for all Idahoans.

Create vibrant communication channels so that we have a better idea of what other regional partners are doing in real time helping us be more efficient and not duplicating efforts.





# Working Groups (OARS) propel the goals into action

**O** pportunities for Access

**A** wareness

**R** esource Assessment

**S** teering



# Opportunities for Access

## Regional Barriers to Equity



Scarcity of culturally inclusive  
methodology

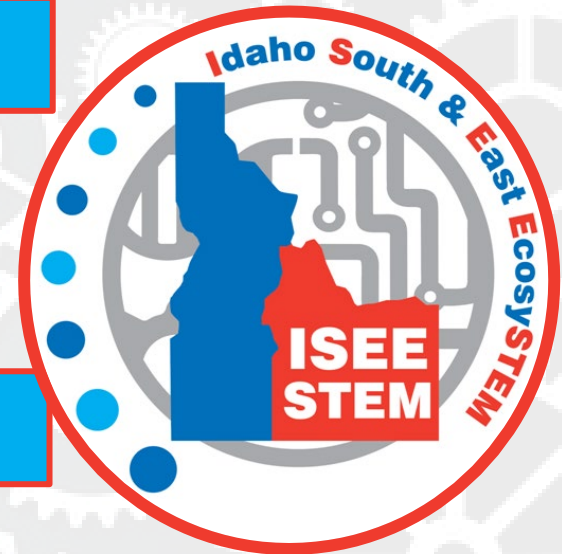
Lack of broadband  
internet

Distance to higher-ed and/or out-  
of-school

Need for recognition of rural-based  
STEM jobs

STEM

awareness





# Awareness

## About the Ecosystem & Regional STEM Opportunities

<https://stem.idaho.gov/isee-ecosystem/>

The screenshot shows the website for the Idaho STEM Action Center, specifically the page for the Idaho South & East EcosysSTEM. The header features the Idaho STEM Action Center logo and a search bar. The main content area is titled "Idaho South & East EcosysSTEM" and includes a mission statement, goals, and steering committee contacts. The footer highlights three key areas: Webpage, Social Media, and Newsletter.

**IDAHO STEM ACTION CENTER**

Agency Search

Our Opportunities ▾ About the Center ▾ Computer Science Our Impact ▾ Support Us ▾ Resources & Portals ▾

Idaho South & East EcosysSTEM

### Idaho South & East EcosysSTEM

#### I SEE STEM Mission Statement

The Idaho South & East EcosysSTEM works to engage partners from our regions (preK-12, higher education, informal education, and industry) to achieve coordination, collaboration, equity and inclusion for all.

As a regional alliance of the Idaho STEM Ecosystem, I SEE STEM strives to support the state vision and our regional mission through the following:

#### Goals

Connect and build sustainable, mutually beneficial networks devoted to moving STEM forward for all Idahoans.

Create vibrant communication channels so that we have a better idea of what other regional partners are doing in real time helping us be more efficient and not duplicating efforts.

#### Working Groups (OARS) propel the goals into action

#### Steering Committee Contacts

**Region 4 (Twin Falls)**  
Heidi Adams - Treasurer  
hladams@csi.edu  
208-732-6429

**W**ebpage **S**ocial Media **N**ewsletter





# Resource Assessment

## STEM Specific

Program Providers

Partners

## Confluent Factors

Labor Developing a  
Workforce

Student/Parent  
resources for Higher  
Ed attendance

MUSEUM  
*of*  
IDAHO



IDAHO FALLS  
**ZOO**  
AT TAUTPHAUS PARK



# steering

## Summary of Governance Structure

Executive Officers w/plan for succession

Leadership – regional/committee leads

Steering - involved

Members



Working with State EcosySTEM

BiPlane – regional hub & state wide

Multiple people serving on all statewide committees

Perhaps first state group to do 4,5,6



# Accomplishments



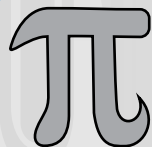
How partnerships have already worked



CyberCore summer camps sponsored by CEI / CSI / INL



ISU joint admission agreement w/ CEI & CSI



We Chose to Create a Governance (CORE) Structure



# Envisioned I SEE STEM Outcomes



onnection to Resources



ollaboration on Cradle to Career Pathways



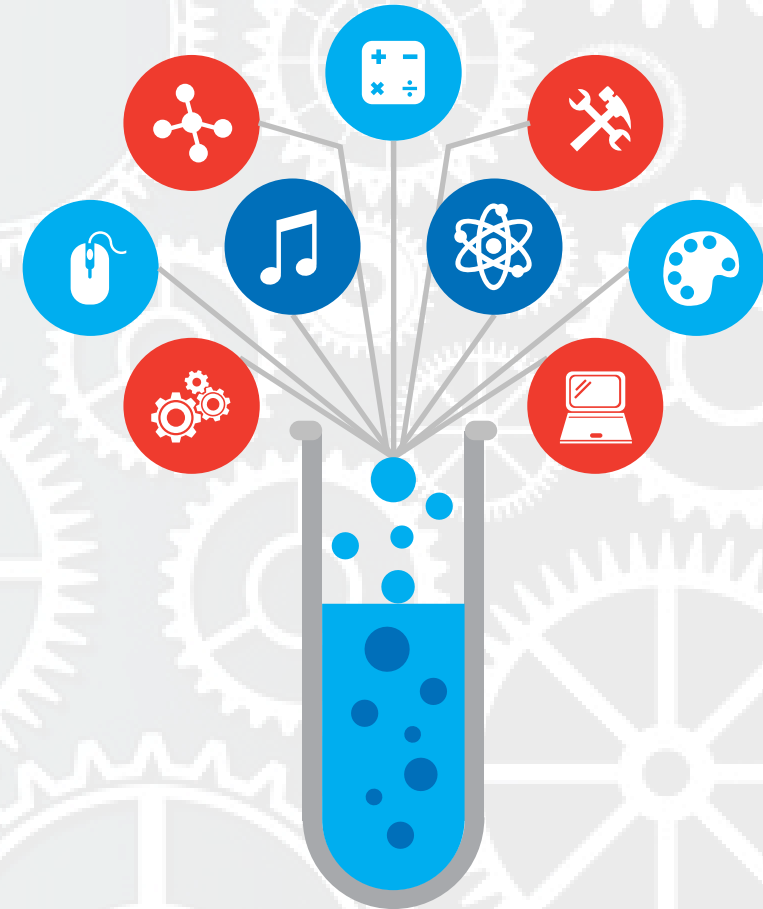
oordination among Partners



ultivation of Equitable Access



ontinuation of Ecosystem



Thank you to NSF & Idaho STEM Action Center  
for funding Ecosystem hub grant



# Leadership



## Executive

Sarah Childers: Chair  
Temple View Elementary

Chris Guthrie: Co-Chair  
Idaho State University

Jennifer Lopez: Secretary  
College of Eastern Idaho

Heidi Adams: Treasurer  
College of Southern Idaho

Karen Baker  
Museum of Idaho

Felice Otero  
United Way of South  
East Idaho

Augusta Grumdahl  
Idaho Falls Zoo

Collette Rothwell  
INL Liaison & District 93

Jessica James  
Shoshone-Bannock  
Tribes

Sonia Martinez  
Idaho State University

Karla LaOrange  
BYU-Idaho

Shelly Nash  
BCCVC Middle School

Sunshine Shepard  
American Indian  
Services

Cindy Thorngren  
STEM Gap

Chris Torgesen  
American Falls School  
District

David Merrill  
Research & Business  
Development Center